

SPECIFICATIONS

FinePix Z300	
Number of effective pixels*1	10.0 million pixels
CCD sensor	1/2.3-inch CCD
Storage media	Internal memory (Approx. 31MB) SD memory card / SDHC memory card*2
File format	Still image: JPEG (Exif Ver. 2.2*) Movie: AVI (Motion JPEG) with sound / Audio: WAVE format, Monaural sound (Design rule for Camera File system compliant)
Number of recorded pixels	Still image: 3,648 × 2,736 (10M) / 3,648 × 2,056 (16:9 format) / 2,592 × 1,944 / 2,048 × 1,536 / 1,920 × 1,080 (16:9 format) / 1,600 × 1,200 / 640 × 480
Lens	Fujinon 5× optical zoom lens, F3.9 (Wide) - F4.7 (Telephoto)
Lens focal length	f=6.4 - 32.0 mm, equivalent to 36 - 180 mm on a 35 mm camera
Digital zoom	Approx. 5.4×
Aperture	Wide: F3.9 / F6.4, Telephoto: F4.7 / F8.0
Focus distance (from lens surface)	Normal: Wide: Approx. 60 cm / 2.0 ft. to infinity Telephoto: Approx. 60 cm / 2.0 ft. to infinity Macro: Wide: Approx. 9 cm - 80 cm / 3.6 in. - 2.6 ft. Telephoto: Approx. 40 cm - 80 cm / 1.3 ft. - 2.6 ft.
Sensitivity	Auto / Equivalent to ISO 100 / 200 / 400 / 800 / 1600 (Standard Output Sensitivity)
Exposure control	TTL 256-zones metering
Exposure mode	Programmed AE
Shooting modes	SR Auto, Auto, Touch & Shoot, Natural Light, Natural Light & with Flash, Manual, Movie SP: Portrait, Landscape, Sport, Night, Night (Tripod), Fireworks, Sunset, Snow, Beach, Party, Flower, Text
Image stabilization	CCD-shift type
Shutter speed	(Auto mode) 1/4 sec. to 1/1000 sec., (All other modes) 4 sec. to 1/1000 sec.
Continuous shooting	Top-5 (max. 0.6 frames/sec.)
Focus	Auto focus (Multi, Center)
White balance	Automatic scene recognition Preset: Fine, Shade, Fluorescent light (Daylight), Fluorescent light (Warm white), Fluorescent light (Cool white), Incandescent light
Self-timer	Approx. 10 sec. / 2 sec. delay, Couple Timer, Group Timer
Flash	Auto flash Effective range (ISO AUTO): Normal: Wide: Approx. 70 cm - 3.5 m / 2.3 ft. - 11.4 ft. Telephoto: Approx. 70 cm - 2.8 m / 2.3 ft. - 9.1 ft. Macro: Approx. 30 cm - 80 cm / 1.0 ft. - 2.6 ft. Flash modes Red-eye removal OFF: Auto, Forced Flash, Suppressed Flash, Slow Synchro. Red-eye removal ON: Red-eye Reduction Auto, Red-eye Reduction & Forced Flash, Suppressed Flash, Red-eye Reduction & Slow Synchro.
LCD monitor	3.0-inch wide, Approx. 230,000 dots, TFT color LCD monitor, Approx. 100% coverage
Movie recording	640 × 480 pixels / 320 × 240 pixels (30 frames/sec.) with monaural sound *Zoom function cannot be used during movie recording.
Photography functions	Touch & Shoot, SR Auto (Scene Recognition Auto), Face Detection (with Auto red-eye removal), Framing guideline, Frame No. memory, Silent mode
Playback functions	Folder management, Edit, Image search, Face Detection (with Red-eye removal), Slide show, Multi-frame playback (with Micro Thumbnail)
Digital interface	USB 2.0 High-speed
Power supply	NP-45 Li-ion battery (included)
Dimensions	92.0 (W) × 56.5 (H) × 18.5 (D) mm / 3.6 (W) × 2.2 (H) × 0.7 (D) in. (excluding accessories and attachments)
Weight	Approx. 130 g / 4.6 oz. (excluding accessories, battery and memory card)

Number of images / recording time

Mode	Still image								Movie	
	3,648 × 2,736	3,648 × 2,056 (16:9)	2,592 × 1,944	2,048 × 1,536	1,920 × 1,080 (16:9)	1,600 × 1,200	640 × 480	Movie recording time		
Number of recorded pixels	3,648 × 2,736	3,648 × 2,056 (16:9)	2,592 × 1,944	2,048 × 1,536	1,920 × 1,080 (16:9)	1,600 × 1,200	640 × 480			
Quality	JPEG FINE	JPEG NORMAL	JPEG	JPEG	JPEG	JPEG	JPEG	VGA (30 fps)	QVGA (30 fps)	
Internal memory (approx. 31MB)	6	12	16	24	39	44	47	201	26 sec.	
SD memory card	512MB	100	190	260	380	600	680	730	3,090	6 min. 13 min.
	1GB	200	390	520	770	1,210	1,370	1,470	6,190	14 min. 27 min.
SDHC memory card	2GB	400	790	1,050	1,540	2,380	2,690	2,950	12,400	28 min. 55 min.
	4GB	800	1,590	2,100	3,100	4,770	5,390	5,900	24,810	56 min.* 111 min.*
8GB	1,610	3,190	4,220	6,220	9,570	10,820	11,850	30,000	112 min.* 223 min.*	

*Actual number of frames and recording time varies depending on the type of memory card or shooting conditions.

*A movie recording will stop automatically when the movie file size becomes approx. 2GB.

*1: Number of effective pixels: The number of pixels on the image sensor which receive input light through the optical lens, and which are effectively reflected in the final output data of the still image.
*2: Please see the Fujifilm website to check memory card compatibility.
*3: Exif 2.2 is a digital camera file format that contains a variety of shooting information for optimal printing.
*4: *CIPA DC-P002:2003 Standard Procedure for Measuring Digital Still Camera Battery Consumption (extract) Pictures shall be taken at a temperature of 23°C, with the LCD monitor turned on, the zoom moved from full wide-angle to full telephoto (or vice-versa) and back again to its original position every 30 seconds, the flash used at full power every second shot and the camera turned off and then on again once every 10 shots.

COLOR VARIATIONS



Black



White



Pink

OPTIONAL ACCESSORIES

Li-ion battery
NP-45



DC coupler CP-45
AC power adapter AC-5VX
Battery charger BC-45

Accessory availability may vary by country.
Please check with your local Fujifilm representative to confirm product availability.

ACCESSORIES INCLUDED

- Li-ion battery NP-45
- Battery charger BC-45W
- Hand strap
- USB cable for the FinePix Z300
- CD-ROM: FinePixViewer
- Owner's manual
- Stylus

Guide to the number of available frames for battery operation

Battery	LCD monitor status	Number of frames
NP-45	LCD monitor ON	Approx. 170 frames

According to the Camera & Imaging Products Association (CIPA) standards*4: The battery (NP-45) is supplied with the camera.

FUJIFILM

FINEPIX Z300

A Touch of Style



New



Microsoft, Windows and Windows logo are trademarks, or registered trademarks of Microsoft Corporation in the United States and/or other countries. Macintosh and Mac OS are trademarks of Apple Computer, Inc., registered in the U.S. and other countries. SD logo is a trademark. All other trademarks are the property of their respective holders.

Specifications and GUI (graphic user interface) are subject to change without notice.
All sample photos are simulated images.

For more information, please visit our Website:
http://www.fujifilm.com/products/digital_cameras/index.html

FUJIFILM
FUJIFILM Corporation

Ref. No. EB-B12E (SK-09-02-F1120-F9711) Printed in Japan ©2009 FUJIFILM Corporation

10.0 Megapixels

5x Optical Zoom

3.0-inch Wide Touch Screen LCD

FinePix . More than you imagined.



3.0-inch Wide Touch Screen LCD

The large, bright, high-resolution LCD display adopts a 16:9 wide-screen aspect ratio. And this beautiful monitor does double duty as an intuitive touch screen interface, putting all camera operations at your fingertips.



Flat & Rounded

Featuring a slim profile and smoothly rounded corners, the FinePix Z300 is a high-performance digital camera with a stylish attitude, simple to carry with you and a joy to hold in your hand.

Touch & Shoot



Touch & Shoot

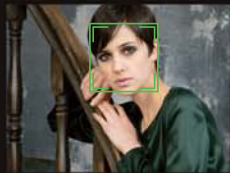
Touch the screen and the camera automatically adjusts focus and exposure for the selected point, then takes the picture.

Scene Recognition Auto **SR AUTO**

Scene Recognition Auto

In SR Auto mode, the Z300 automatically recognizes the scene and selects optimum settings to ensure beautiful pictures in various shooting situations.

Portrait



Z300 in SR AUTO

Landscape



Z300 in SR AUTO

Night Portrait



Conventional camera in Auto mode

Z300 in SR AUTO

Night



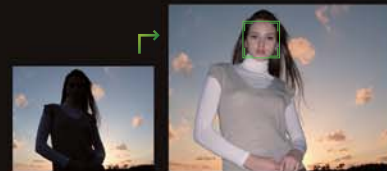
Z300 in SR AUTO

Macro



Z300 in SR AUTO

Backlit Portrait



Conventional camera in Auto mode

Z300 in SR AUTO

Touch & Show



Folder Management

Organize your photos into folders at the touch of a finger. Touch a photo to select it, then drag it to one of the folders displayed on the touch screen interface and file it away. To see what's in a folder, just tap on the icon and display the content. With intuitive touch screen features, it's easy to organize and manage your entire image library, right inside the camera.



Image Search

by Date A touch of the finger arrays your photos by date, making it easy to locate specific events or occasions.

by Face All your portraits can be selected and replayed based on composition: group photos, couple pictures, or solo portraits.

by Scene Photos shot with Auto or SR Auto mode can be replayed according to the type of scene: portrait, landscape, night scene, macro and more....

by Type of Data Display the content of your image library according to the type of data: still photos, edited images, or movie footage.

Collage

The collage function lets you combine several photos into an on-screen collage, all at the touch of a finger.





10.0 Megapixels

The sleek, rounded lines conceal a full 10 megapixels of imaging performance, giving you high-resolution pictures that can be cropped or enlarged without sacrificing image quality.

High Sensitivity ISO1600

Indoors, at night, or in the midst of the action, high sensitivity (ISO 1600) makes it easy to take bright clear photos regardless of the conditions.

5x Optical Zoom

A high-quality Fujinon 5x optical zoom lens lets you capture the wide-angle view or move right in for high-impact close-ups.



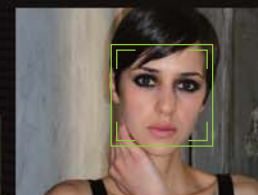
Wide angle



5x optical zoom



Lost photo opportunity



FinePix Z300

Face Detection with Auto Red Eye Removal

Face Detection identifies faces in the frame and optimizes focus and exposure, ensuring flattering people pictures, every time. Auto red-eye removal identifies and compensates for red-eye in detected faces, for attractive flash-lit portraits and party pictures.

Dual Image Stabilization

The combination of high sensitivity and CCD shift image stabilization works to eliminate blurred photos by freezing action and minimizing the effects of camera shake.



Conventional digital camera



FinePix Z300



Conventional digital camera



FinePix Z300

Super Intelligent Flash

Super Intelligent Flash automatically calculates optimum flash output and sensitivity, capturing both the subject and the background in beautiful, natural-looking detail. And even subjects shot in close-up Macro mode are captured beautifully, with no loss of detail in highlight areas.

Natural Light & with Flash

This convenient mode automatically captures the same scene twice, once at high sensitivity with natural light and once with Intelligent Flash. Both photos are then displayed side-by-side for quick comparison and selection.



First shot without flash (Natural Light)



Second shot with Super Intelligent Flash